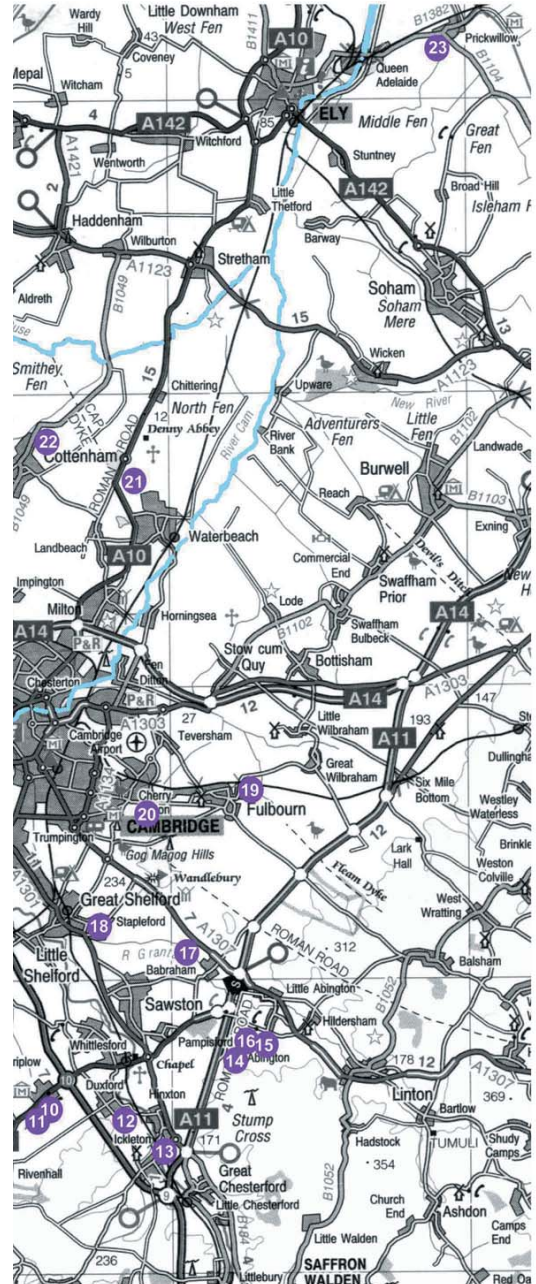
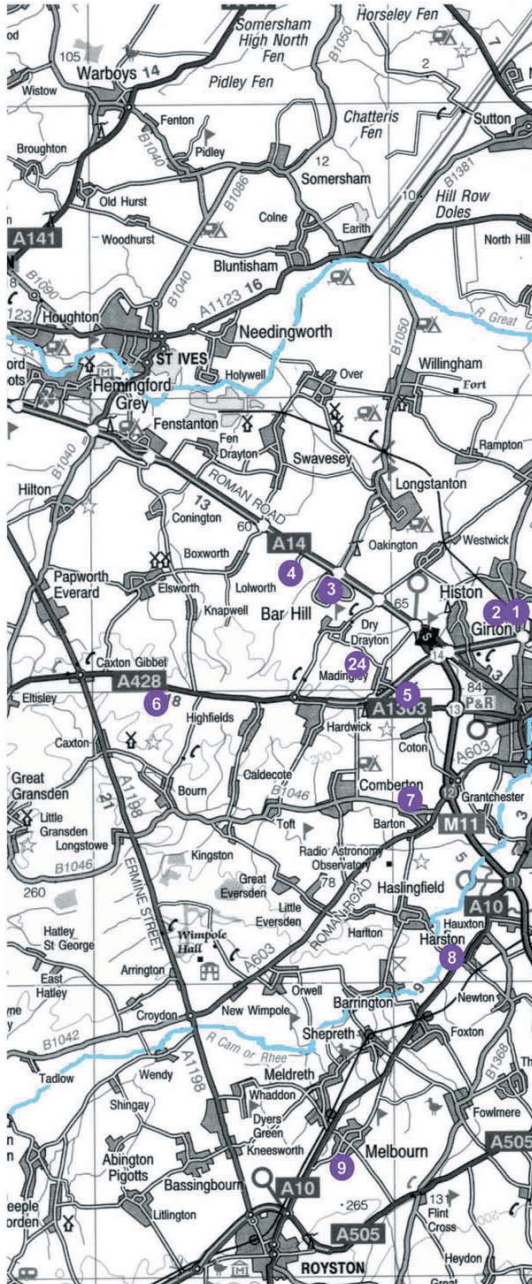


# MAP 4

## SURROUNDING AREA

10 km





1

- A Craig House (1970)
- B Mr and Mrs G Craig
- C Cambridge Design Group
- D John Briant
- E 74 Water Lane, Histon
- F private residence



2

- A Vision Park (1986-1991)
- B Merivale Moore / Tartan Developments
- C Tartan
- D Tartan
- E Chivers Way, Histon
- F by arrangement



3

- A Bar Hill Ecumenical Centre (1991)
- B Bar Hill Ecumenical Centre
- C Ivor Richards
- D Sindall
- E off Viking Way
- F by arrangement



4

- A Coe House, 'Martins' (1984)
- B Mr and Mrs Coe
- C Ivor Richards
- D Jakubowski Builders Ltd / self build
- E Robins Lane, Lolworth
- F private residence
- G Later additions by same architect / TJ Construction



5

- A American Cemetery (1956)
- B The American Battle Monuments Commission
- C Perry Shaw Hepburn Keyhoe and Dean (Boston, USA)
- D unknown
- E off A1303, Coton
- F public War Memorial



6

- A Cambourne Business Park Phases One and Two (2000 / 2001)
- B Development Securities PLC
- C Wrenbridge Design
- D R G Carter Ltd
- E Cambourne (off A428)
- F by arrangement



7

- A Wendon House (1965)
- B Mr and Mrs John Wendon
- C Barry Gasson and John Meunier
- D Rattee and Kett
- E New Road, Barton
- F private residence
- G later alteration by Viren Sahai, a second Wendon House is next door by Saunders Boston



8

- A Harston Mill (1986)
- B C I S (1886) Scientific Generics (2001)
- C R H Partnership
- D SDC Builders Ltd / John Brignell Ltd / Mowlem Rattee and Kett
- E off A10, Harston
- F by arrangement
- G Later buildings (2001) Cowper Griffiths, built by R G Carter Ltd



9

- A PATS Centre (1975)
- B PA International Management Consultants
- C Piano and Rogers
- D R G Carter Ltd
- E off A10, Melbourn
- F by arrangement



10

- A American Air Museum (1996)
- B Imperial War Museum
- C Foster and Partners
- D John Sisk Ltd
- E Imperial War Museum, Duxford
- F public museum
- G RIBA Award 1999  
Civic Trust Award 1999



11

- A Land Warfare Hall (1991)
- B Imperial War Museum
- C R H Partnership
- D SDC Builders Ltd
- E Imperial War Museum, Duxford
- F public museum



12

- A CIBA (1959-64)
- B CIBA
- C Arup Associates
- D William Sindall Ltd
- E Ickleton Road, Duxford
- F by arrangement



13

- A The Sanger Centre (1997)
- B The Wellcome Trust
- C Sheppard Robson
- D Bovis Construction Ltd
- E Genome Campus, Hinxton
- F by arrangement



14

- A Staff Restaurant (1977)
- B TWI (the Welding Institute)
- C Lyster Grillet and Harding
- D Rattee and Kett
- E The Welding Institute, Abington
- F by arrangement



15

- A Research Facility (2000)
- B Ribotargets Ltd / Granta Park Ltd
- C Fielden & Mawson
- D Glanville Projects
- E Granta Park, Abington
- F by arrangement



16

- A Research Facility (2000)
- B Celltech Chiroscience Ltd / Granta Park Ltd
- C Thurlow Carnell and Curtis
- D Glanville Projects
- E Granta Park, Abington
- F by arrangement



18

- A Owers House 'The Paddock' (1976)
- B Mr and Mrs Owers
- C David Owers
- D Bennett and Kidd
- E off Bar Lane, Stapleford
- F private residence



19

- A Dyke House, 'Stocks' (1990)
- B Mr and Mrs Dyke
- C Saunders Boston
- D Johnson and Bailey Ltd
- E Church Lane, Fulbourn
- F private residence



20

- A ARM Building (2000)
- B Churchmanor Estate Company
- C Barber Casanovas Ruffles
- D Haymills (Contractors) Ltd
- E Peterhouse Technology Park, Fulbourn Road
- F by arrangement



21

- A Stirling House (USAFE/MOD HQ) (1994)
- B USAFE / MOD
- C Barber Casanovas Ruffles
- D Amec
- E Stirling Way, Waterbeach
- F by arrangement



22

- A West House, 'The Wooden House' (1988)
- B Mr W West
- C Cowper Griffith Associates
- D Andy Wimm / self build
- E Twentypence Road, Cottenham
- F private residence
- G Civic Trust Commendation 1990



23

- A Banham House (1997)
- B Mrs Banham
- C Jonathon Ellis Miller
- D R G Taylor
- E Kingdon Avenue
- F private residences
- G Also see the adjoining Ellis Miller House which received an RIBA Award 1993



24

- A The Tower Building (1995)
- B University of Cambridge, Board of Continuing Education
- C Cowper Griffith Associates
- D Amey Building Ltd
- E Madingley Hall, Madingley
- F by arrangement